

## 5.4.8 Magnetic Ring and Ferrite Clamp

### Model

The magnetic ring can be used on the input or output side of the AC drive. Install it as close to the AC drive as possible. When installed on the input side, the magnetic ring can suppress the noise in the input power supply system of the drive. When installed on the output side, the magnetic ring can suppress interference generated by the AC drive to external devices and reduce the bearing current.

In applications with leakage current and signal cable interference, install a magnetic ring or a ferrite clamp.

- Amorphous magnetic ring: featuring high permeability when the frequency is within 1 MHz and excellent anti-interference performance, but not as low-cost as the ferrite clamp
- Ferrite clamp: featuring high permeability when the frequency is above 1 MHz and excellent suppression performance on interference generated by low-power drives and signal cables

Table 5-66 Appearance and models of the magnetic ring and ferrite clamp

Type	Model	Appearance
Magnetic ring	DY644020H	
	DY805020H	
	DY1207030H	
Ferrite clamp	DYR-130-B	

## Dimensions

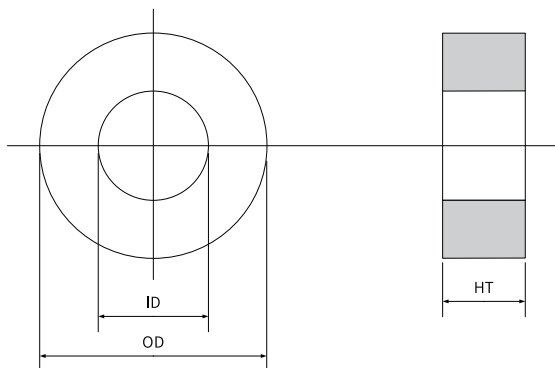


Figure 5-49 Dimensions of the magnetic ring

Table 5-67 Dimensions of the magnetic ring

Model	Dimension (OD x ID x HT) (mm)
DY644020H	64 x 40 x 20
DY805020H	80 x 50 x 20
DY1207030H	120 x 70 x 30

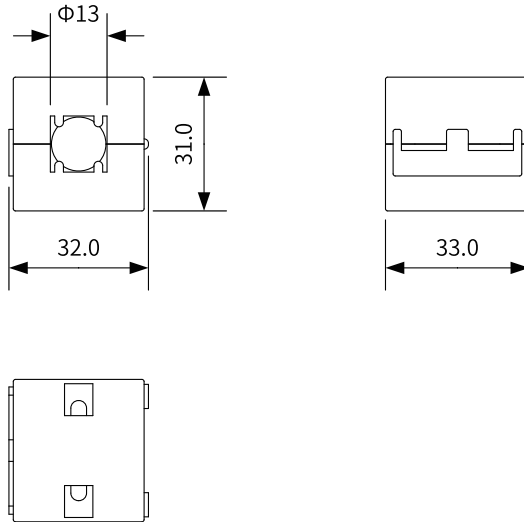


Figure 5-50 Dimensions of the ferrite clamp (unit: mm)

- Connect the LINE terminal of the EMC filter to the power grid, and the LOAD terminal to the AC drive.

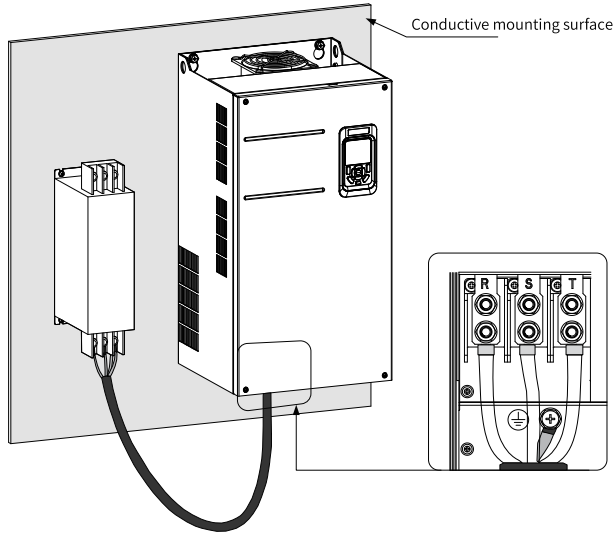


Figure 9-1 Installing an EMC filter

## 9.5 Magnetic Ring and Ferrite Clamp

The magnetic ring can be used on the input or output side of the AC drive. Install it as close to the AC drive as possible. When installed on the input side, the magnetic ring can suppress the noise in the input power supply system of the drive. When installed on the output side, the magnetic ring can suppress interference generated by the AC drive to external devices and reduce the bearing current.

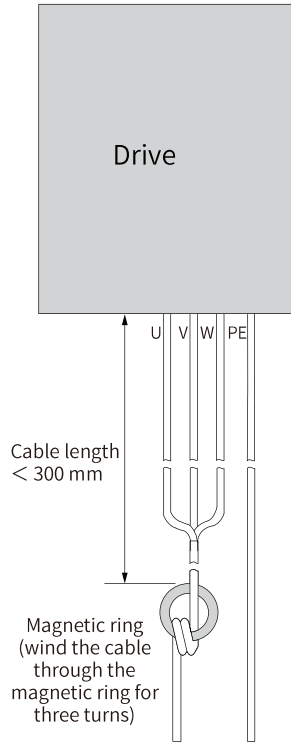


Figure 9-2 Installing the magnetic ring

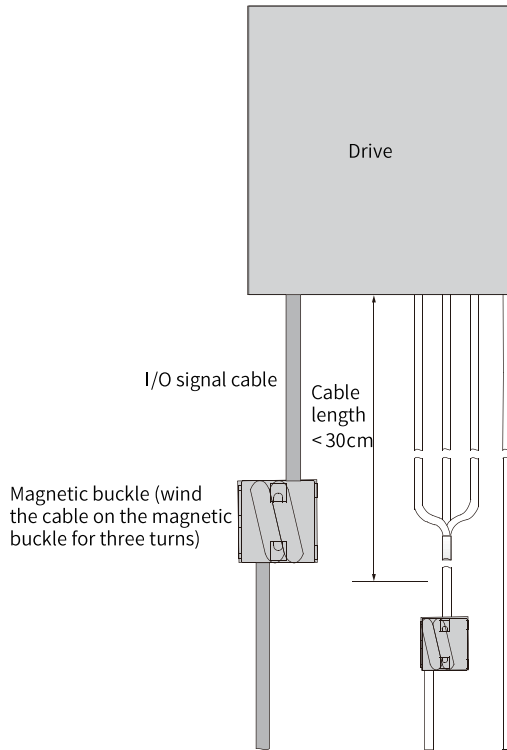


Figure 9-3 Installing the ferrite clamp

---

**Note**

The R/S/T or U/V/W cables must pass through the same ferrite core to suppress the common mode noise.

---